

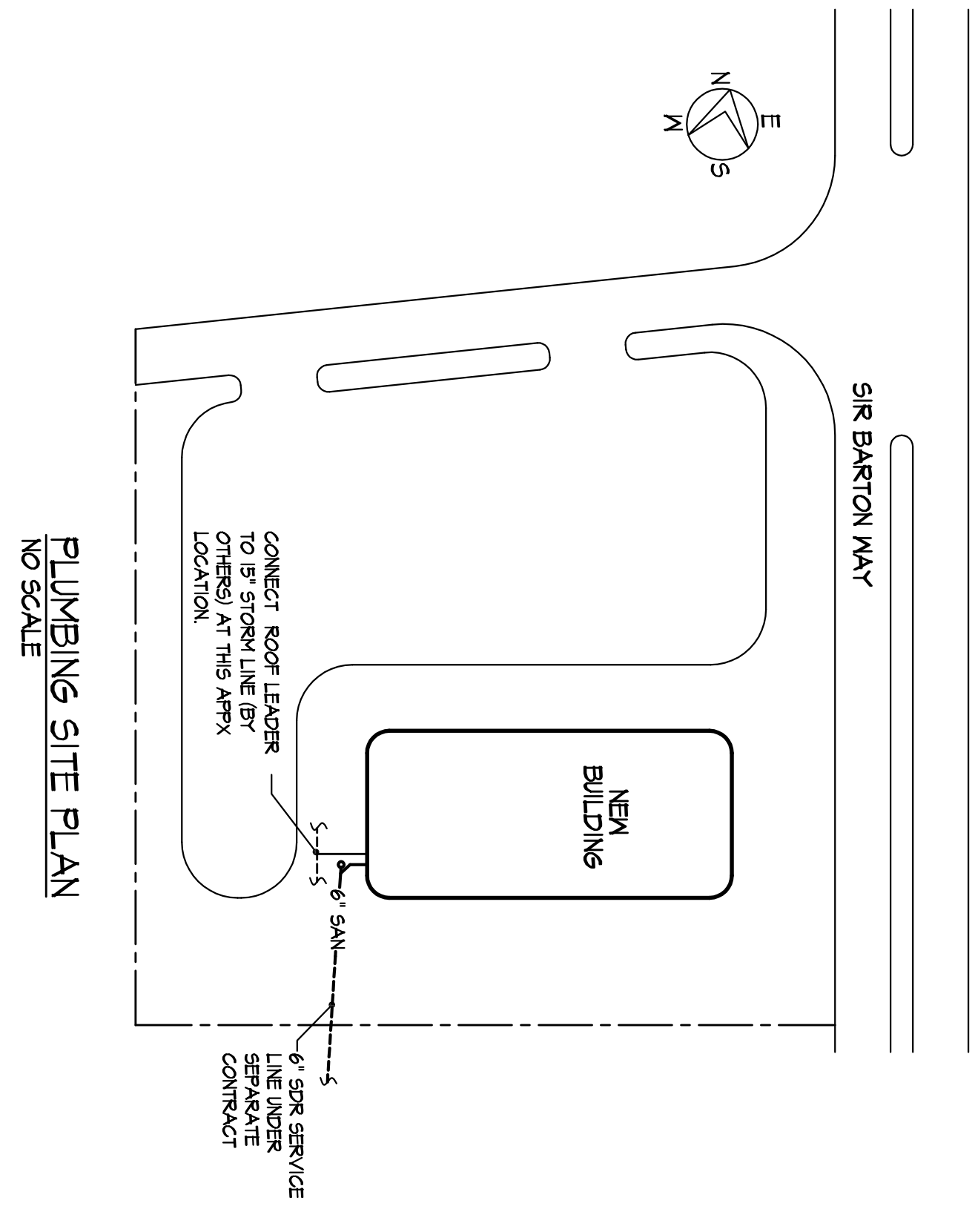
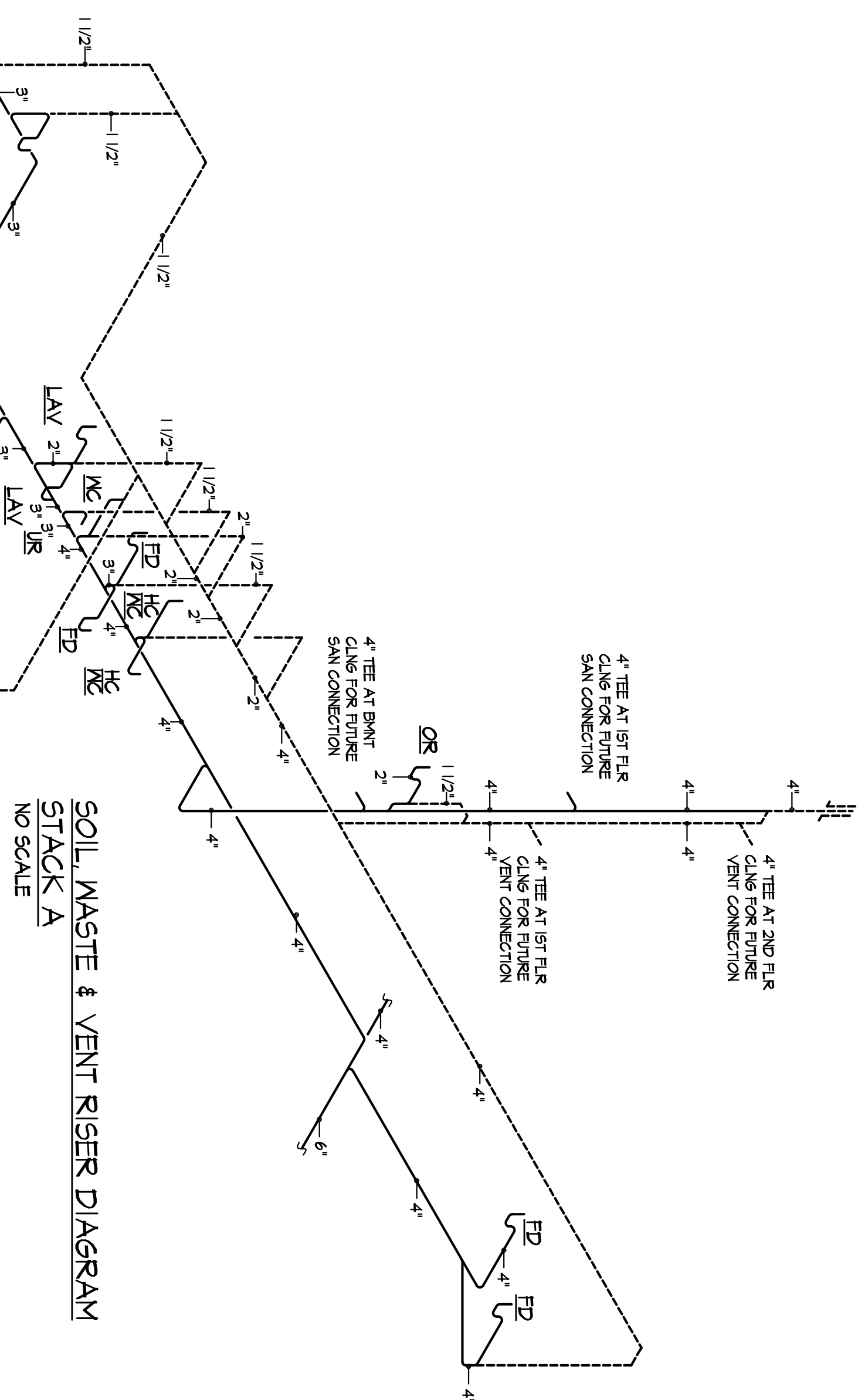
**MEDICAL GAS NOTES - DR. JACKSON**

TAGED NOTES: (★)

- UTILITY CENTER
- WED GAS STATION FURNISHED BY DENTAL EQUIPMENT SUPPLIER AND INSTALLED UNDER THIS CONTRACT.
- AIR VALVE FURNISHED BY DENTAL EQUIPMENT SUPPLIER AND INSTALLED UNDER THIS CONTRACT.
- WED GAS MANIFOLD FURNISHED BY DENTAL EQUIPMENT SUPPLIER AND INSTALLED UNDER THIS CONTRACT.

GENERAL NOTES:

- N2O PIPING IS 3/8". O2 PIPING IS 1/2". COMPRESSED AIR LINE IS 1/2"
- COORDINATE ALL CONNECTION REQUIREMENTS WITH DENTAL EQUIPMENT SUPPLIER.



**FRANTZ FRANTZ FRANTZ**  
MECHANICAL CONTRACTORS

FRANTZ, INC. Lexington, Ky 40555  
852 Floyd Dr. Office (859) 233-1335  
P.O. Box 5210 FAX (859) 233-3507

ARCHITECTURE *etc*

E. THOMAS CRUZE, ARCHITECT 629 POPLAR SPRINGS LANE LEXINGTON, KENTUCKY 40515 (606) 272-3944

**Office Space QUEST ENGINEERS, INC.**

SIR BARTON WAY LEXINGTON, KENTUCKY

Composite Drawing showing fittings and changes through Nov. 18, '05  
Nov. '05 - Add Dr. Tipton Fit-Up.

Aug. '04-Add 2nd Floor Fit-Up.

**P-1**