

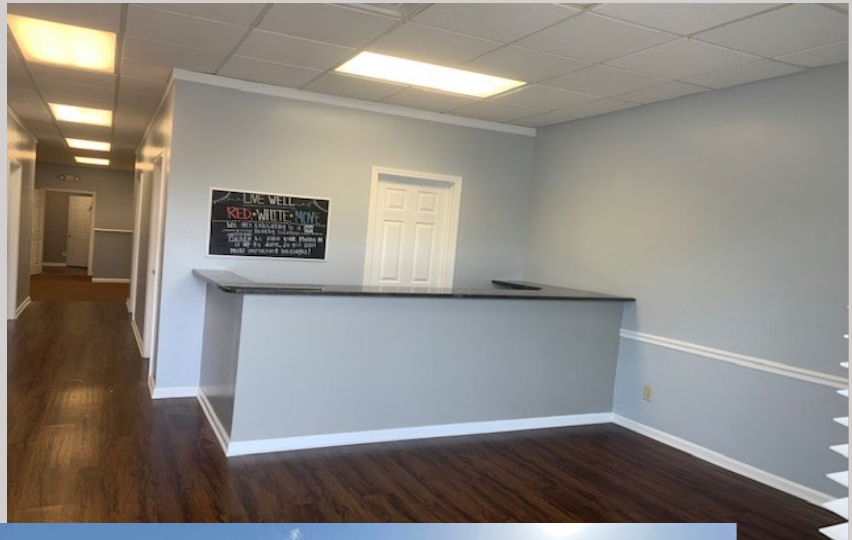
2187 LEXINGTON ROAD, RICHMOND, KY 40475



Property Type:	Multi-use facility
Zone:	B-3
Building Size:	28,000 S.F.
Rental Rate:	\$13.00-\$17.00 P.S.F.
Term:	3 – 5 Years
Space available:	3,625 S.F.
A-3*	1,500 S.F. (\$14.50-16.50 PSF)
B-3*	2,125 S.F. (\$15.00 P.S.F.)

BUILDING FEATURES

This property offers an excellent location just minutes from I-75, Downtown Richmond, and the Eastern Bypass. We have a great tenant mix including office, retail, restaurant, and recreational tenant. The property has ample parking to service our tenants and their clients and customers. Pylon signage is available and offers high visibility adjacent to Lexington Road.



*Space A3 is currently built out for a medical office. Space B3 has a large open area with two private offices.



Contact

Vickey Strunk
Cell: 859-582-8092
Office: 859-255-8855
vstrunk@colemangroup.net

710 East Main Street
Lexington, KY 40502
www.ColemanGroup.net