



More Information:

Contact Isa Mashni
imashni@colemangroup.net
(859) 255-8855 - Office
(859) 421-6700 - Cell
colemangroup.net

*Available
January 1, 2026*

PRIME BANK SPACE AVAILABLE FOR LEASE:

**301 EAST MAIN STREET
LEXINGTON, KY 40507**

We are pleased to offer versatile office space specifically designed for banking operations with the following key features:

- ☑ First-floor walk-up teller stations for easy access
- ☑ Drive-thru ATM and drive-thru lanes for customer convenience
- ☑ Vault included within the premises for secure storage
- ☑ Prominent building signage available to increase visibility and brand presence
- ☑ Flexible square footage options ranging from 10,470 SF to 18,933 SF, perfect for accommodating both large and small banking operations

CONVENIENT & SECURE PARKING

- ☑ Easy Access: Direct access to on-site parking for quick and stress-free visits.
- ☑ Secure: Well-lit and monitored covered parking area to ensure peace of mind.
- ☑ Ample Spaces: Plenty of spots available for both short and long-term parking.
- ☑ Affordable Rates for Parking
- ☑ This space offers the ideal setup for financial institutions looking to expand or establish their presence in a high-traffic location.

*For more information or to schedule a tour, please contact Isa Mashni at (859) 421-6700



COLEMAN GROUP

COMMERCIAL REAL ESTATE & PROPERTY MANAGEMENT



HIGHLIGHTS:

This prominent office tower in the heart of downtown Lexington features on-site covered parking, flexible floor plans and dedicated property management. Located at 301 East Main Street, this building is a 12-story, 126,143 SF office building with professionally landscaped grounds and floor-to-ceiling windows allowing abundant natural lighting.

Located in the heart of downtown, this building is one of the key features of Lexington cityscape, presenting an ideal destination for businesses in search of prime, professional office space.

- ☑ Move-in ready office space with flexible floor plans & lease terms
- ☑ Easily accessible while located along Main Street with abundant on-site parking in the attached covered parking garage.
- ☑ On-site amenities include a common conference room with a kitchen, after-hours security, 24/7 key fob access, and property management.
- ☑ Prime Downtown Lexington location with seamless connections in and out of town and within walking distance of several high-end restaurants and shops.

PROPERTY FEATURES:

- ☑ Building Signage Opportunities
- ☑ Spectacular Views
- ☑ Quality Interior Finishes
- ☑ Covered Pedway to Parking Structure
- ☑ Professional On-site Management
- ☑ Common Conference Room with Kitchen (40+ People)
- ☑ Full-time Day Porter & Cleaning Service
- ☑ Stories: 12; Zoning: P-1
- ☑ Rental Rate: \$17.50-23.00/SF Full Service
- ☑ Generous Tenant Improvement Packages
- ☑ After-Hour Card Key Access
- ☑ Flexible Terms

ADDITIONAL PHOTOS:

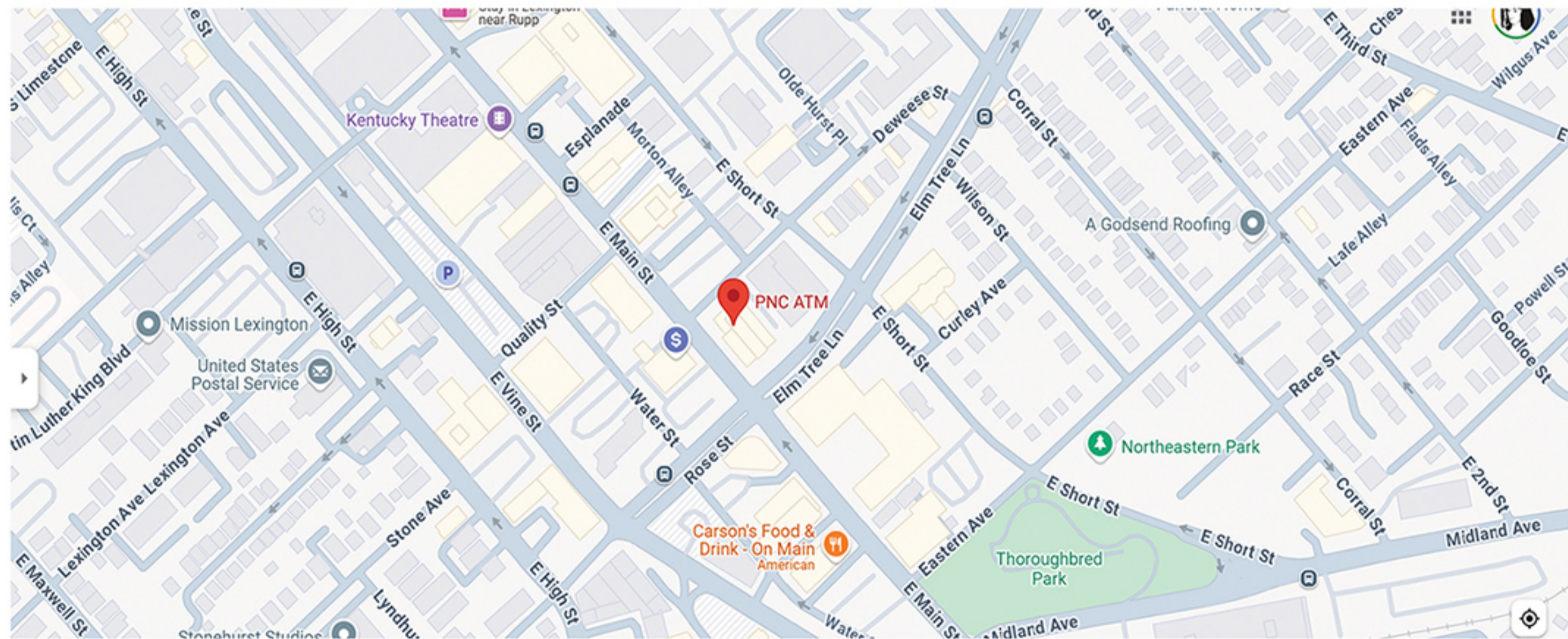


COLEMAN GROUP

COMMERCIAL REAL ESTATE & PROPERTY MANAGEMENT

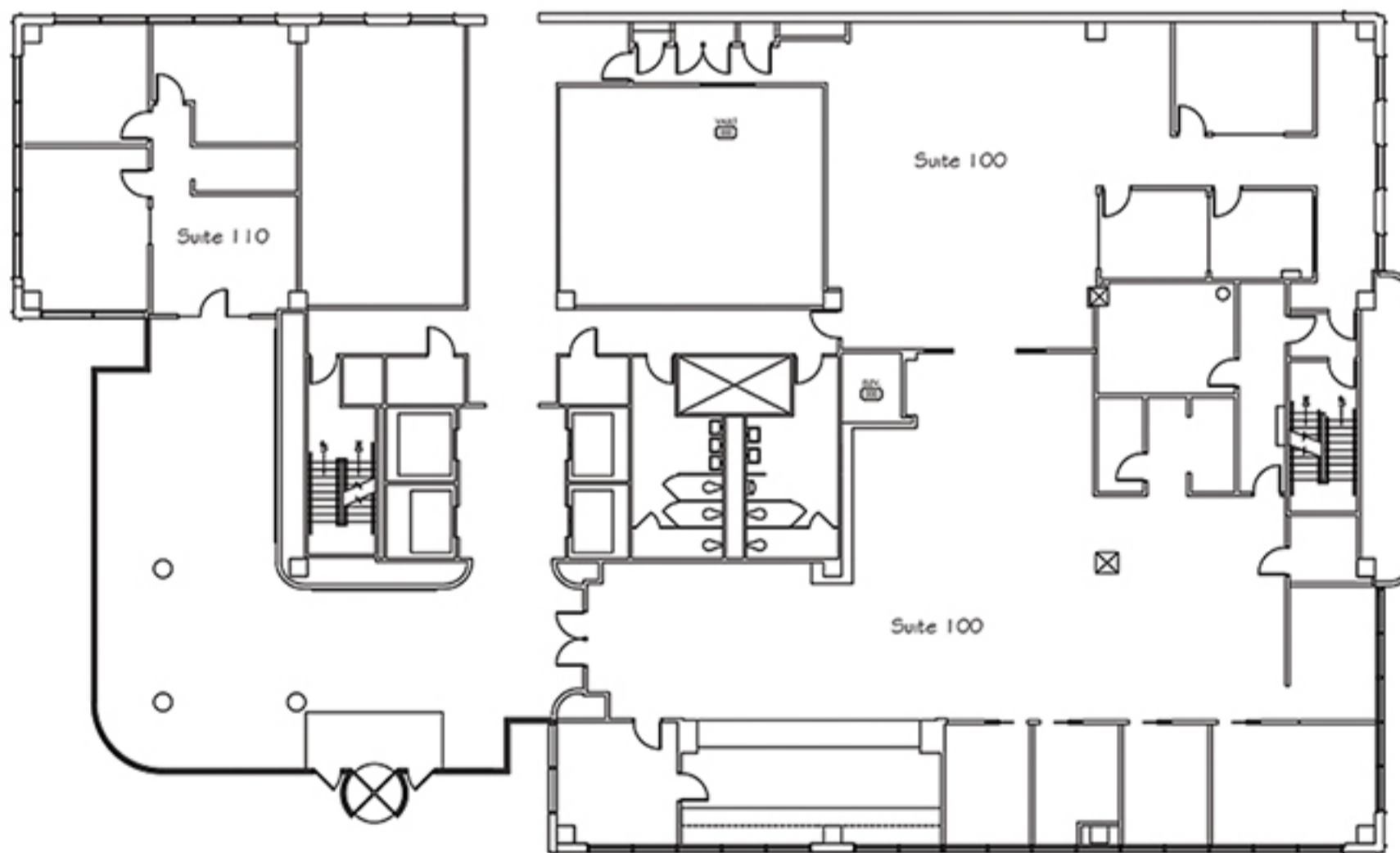


GREAT DOWNTOWN LOCATION: 301 E. Main Street, Lexington KY





FLOORPLAN: Suite 100, First Floor



DATE: 01/21/25