



More Information:

Contact Vickey Strunk  
 vstrunk@colemangroup.net  
 (859) 255-8855 - Office  
 (859) 582-8092 - Cell  
 colemangroup.net

## RICHMOND OFFICE SPACE FOR LEASE

**1018 IVAL JAMES BLVD  
 RICHMOND KY 40475**

### PROPERTY FEATURES:

- ☑ Property Type: Professional Office
- ☑ Building Class: C
- ☑ Year Built: 2000
- ☑ Stories: 1
- ☑ Unfinished Ceiling Height: 11'
- ☑ Building Size: 9026 SF
- ☑ Rental Rate: \$17.50 SF
- ☑ Lease Term: Negotiable
- ☑ Space Available: 2044 SF
- ☑ Free & Ample On-site Parking
- ☑ Features: 24 Hour Access
- ☑ Excellent Signage Opportunity
- ☑ Available: December 1, 2024

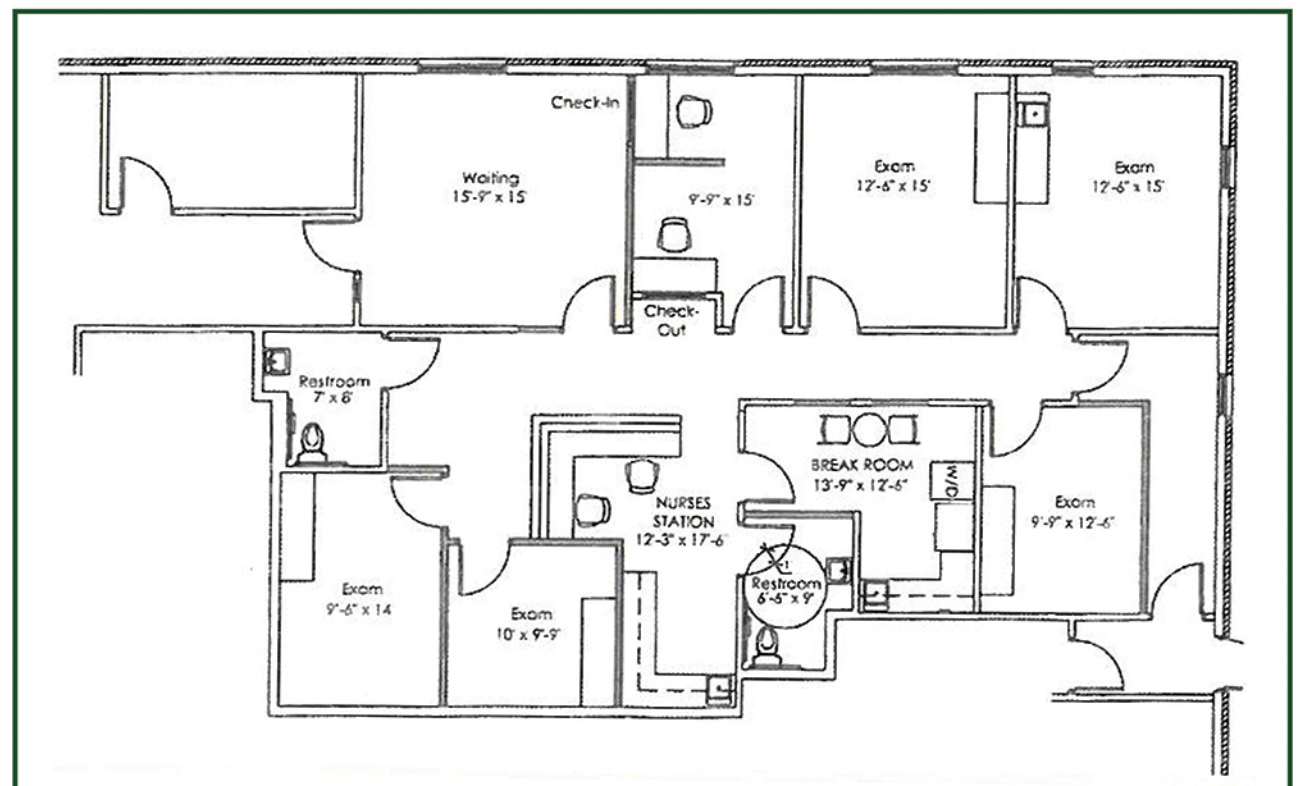


### ARE YOU READY TO ELEVATE YOUR BUSINESS?

This building exudes professionalism and success. Discover our exclusive 2044 SF office space available in the heart of Richmond KY, just off Interstate 75, close to EKU and downtown Richmond.

### WHY CHOOSE THIS SPACE?

1018 Ival James Blvd is just off the Dr. Robert Martin Bypass, located in a professional office park environment across the street from Kohl's shopping center. The office space is versatile enough to fit your needs, with all the amenities you'd expect with an affordable price and flexible lease terms.



**COLEMAN GROUP**

COMMERCIAL REAL ESTATE & PROPERTY MANAGEMENT